

# Twickenham & Richmond Tribune



The White Cross, Richmond  
Photo by Berkley Driscoll

28<sup>th</sup> February 2025

T&RT



# Contents

TickerTape:

South Western Railway

The Tree Agency

Local Picture Postcard Column - St Mary's Church Memorial Plaques 2. Sir Godfrey Kneller

Alan Winter

Crusader Travel

Smile For The Camera

Doug Goodman

Letters

Barnes Police Liaison Group Meeting

Metropolitan Police

Kick off the seeding season with a free seed swap

Borough of Richmond Allotment Group

Fuller's to acquire The White Swan, Twickenham

Fuller, Smith & Turner

News from Holy Trinity Twickenham

Holy Trinity Twickenham

Next week at Richmond Council

Interim Chief Takes Over Richmond

Tennis star and television presenter Annabel Croft joins Friends of Richmond Park as patron

Friends of Richmond Park

Help us create a new transport strategy for Richmond

Richmond Council

Twickers Foodie - Some Flipping Good Ideas for Shrove Tuesday

Alison Jee

The Experience Package

Sunborn Gibraltar

It's Never Too Late To Have A Bit Of Fun!!

Bruce Lyons

Clap for the Wonderful NHS

Teresa Read

The Stick that Stuck...

Deep Patel

Mark Aspen Review: The Shark is Broken

Denis Valentine

Mark Aspen Review: The Koala Who Could

Steve Mackrell

Mark Aspen Review: Cruel Intentions

Thea Diamond

Monteverdi's Orfeo

Richmond Opera

Barnes Safer Neighbourhoods Team: Crime Update March 2025

Metropolitan Police

St Mary's Signs Research Partnership Agreement with Cirque du Soleil

St Mary's University

New STEM Centre Opens with the Mayor of London's Support at Richmond Upon Thames College

Richmond College

South London to Drive Growth Under New London Plan

The South London Partnership

A VIP visit to Princess Alice Hospice

Princess Alice Hospice

England squad update

RFU

England U19 Men To Face Scotland At Percy Park RFC

RFU

Highlights, report and reaction: Brentford 1 Everton 1

Brentford Football Club

Editors: Berkley Driscoll, Teresa Read

# TickerTape - News in Brief

## South Western Railway

Altered train services and buses replace trains in the Wimbledon area **Sunday 2 March**

The lines in the Wimbledon area will be closed all day due to maintenance work.

- **London Waterloo to Shepperton** services will be **revised** and will be diverted between **Clapham Junction and Fulwell via Richmond**.
- **London Waterloo to London Waterloo via Wimbledon and Kingston** services will **not** run.
- The afternoon and evening **London Waterloo to Kingston via Hounslow** services will **not** run.
- **London Waterloo to Hampton Court** services will **not** run.

### Buses will run between:

Clapham Junction and Surbiton via Kingston

Clapham Junction and Hampton Court via Surbiton (buses will not call at Berrylands)



**The Tree Agency**

darryl parkin

The Treehouse  
25 King Edwards Grove  
Teddington, Middlesex TW11 9LY  
Telephone 020 8274 0107  
Mobile 07960 123580  
Fax 020 8274 0119  
info@thetreeagency.co.uk  
www.thetreeagency.co.uk

*The Tree Agency*

# Local Picture Postcard Column - Part 290

## St Mary's Church Memorial Plaques

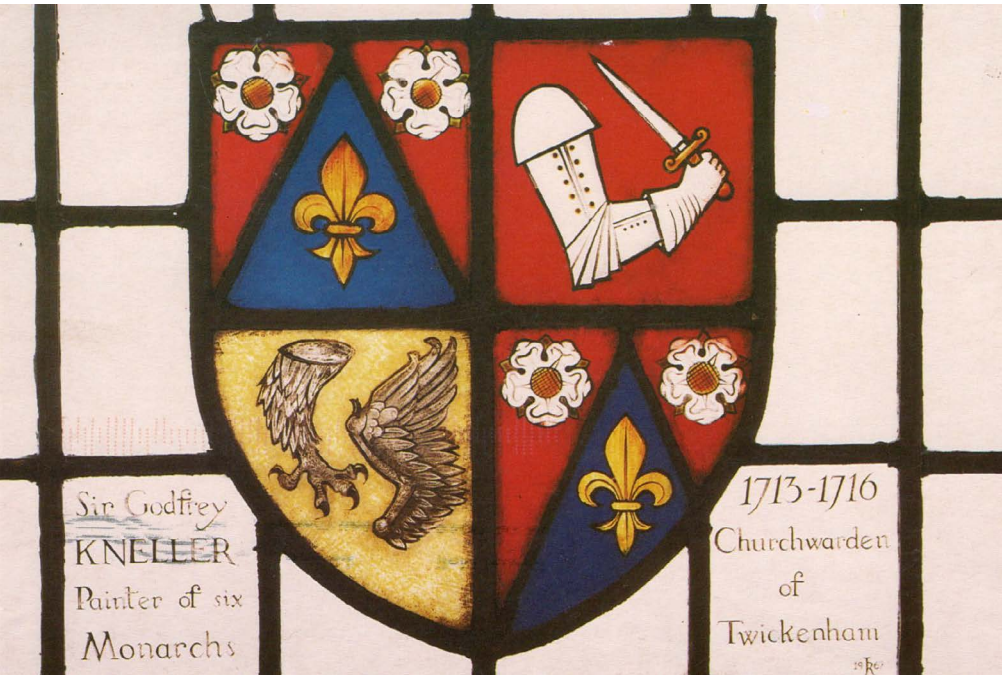
2. Sir Godfrey Kneller

By Alan Winter

This is the second week that this postcard column features a plaque that you can see on the walls of St Mary's Church in Twickenham's Church Street. As postcards go, they are relatively modern but they show plaques of people who were and remain two of Twickenham's most famous and creative residents. We started with Alexander Pope last week and this week move on to Sir Godfrey Kneller.

Interestingly, both Pope and Kneller lived in Twickenham during the same period of the 18th

Century and would certainly have known each other in what was a much smaller town in those days.



This postcard shows the Coat of Arms of Sir Godfrey Kneller who was Church Warden at St Mary's when the nave of the present Church was completed in 1714.

The first (Circular) painting is a self portrait and the second is by an unknown artist.

Sir Godfrey Kneller, 1st Baronet (born Gottfried Kneller; 8 August 1646 – 19 October 1723) was a German-born British painter. Arriving in England in 1674 or 1675, he soon established himself as the leading portraitist in the country. He served as court painter to six successive English and British monarchs, including Charles II of England and George I of Great Britain. Kneller also painted scientists such as Isaac Newton and foreign monarchs such as Louis XIV of France. He was also commissioned by William III of England to paint eight "Hampton Court Beauties" to match a similar series of paintings of Charles II's "Windsor Beauties" that had been painted by Kneller's predecessor as court painter, Peter Lely.

Kneller was knighted in 1691 and made a baronet in 1715.







In 1709 He built a country house in Whitton. The first house on the site was built by Edmund Cooke between 1635 and 1646 and in 1664 was the fourth largest house in Twickenham. Kneller had the original house demolished and replaced by a new building, reputedly designed by Sir Christopher Wren. This second house was known as Whitton Hall, after the village, but was renamed by Kneller's widow, in memory of her husband.

Kneller died of fever in 1723 at Great Queen Street and his remains were interred at Twickenham. He had been a churchwarden at St Mary's, Twickenham, when the 14th-century nave collapsed in 1713 and was active in the plans for the church's reconstruction by John James. His widow was buried at Twickenham on 11 December 1729.

Sir Godfrey Kneller is the only portrait painter to be commemorated in Westminster Abbey. His marble monument, set up in 1730, is by sculptor JM Rysbrack.

Kneller's country house eventually became the home of the Royal Military School of Music. The school was established at Kneller Hall in the mid 18th Century, and was rebuilt after a fire in 1848. It is a Grade II listed mansion training musicians for the British Army and was also home to the school's Museum of Army Music. The Army vacated the site on 31 August 2021. In September 2021 it was announced that the hall would become the Upper School for Radnor House School, Twickenham, that had been housed in Pope's Villa Twickenham.

We are now only a month from the first Postcard Fair of 2025 which will take place at the Teddington Baptist Church in Church Road between 10.00 and 4.00 on Saturday 22<sup>nd</sup> March. With over a dozen dealers and tens of thousands of postcards for sale priced from pennies to pounds. With stamps and coins also for sale and light refreshments available all day, it's one of the most interesting ways of spending a few hours that you can imagine. Stick it in your diary!

With nearly 300 weekly columns behind me in the Tribune I am beginning to run out of postcards of our local area that I haven't already written about. So, my search for old postcards continues. I am always looking for old postcards and old photograph albums etc. The postcards can also be British or Foreign, black and white or coloured and of places or subjects.

If you have any that are sitting unwanted in a drawer, in a box in the loft or in the garage or under a bed, please contact me on 07875 578398 or [alanwinter192@hotmail.com](mailto:alanwinter192@hotmail.com) I would like to see them and I pay cash!

# CrusaderTravel

020 8744 0474

[crusadertravel.com](http://crusadertravel.com)

Escapology Experts

[info@crusadertravel.com](mailto:info@crusadertravel.com)



Your friendly local Travel Agency  
established in Twickenham since 1966

With over 50 years experience we pride ourselves on being able to offer an unrivalled service with attention to detail. Come and have a chat with us in our cosy office off the Church Street Square, we are open 6 days a week from 11am until 6pm (Closed Sunday)



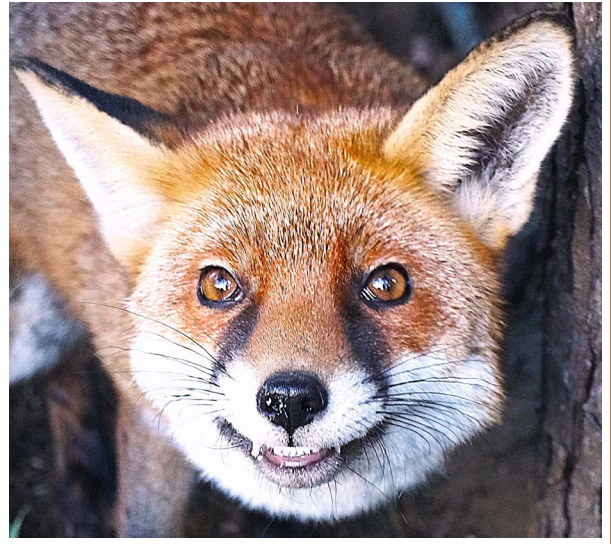


# Smile For The Camera

By Doug Goodman

Twickenham resident Doug Goodman was enjoying the sun in his garden when this fine fellow approached and smiled at him!

What next singing squirrels and croaking frogs?



## LETTERS

Dear Editor

### Avian observations

Sitting at sunset this evening opposite 'Cormorant Island' (as it's colloquially known), located in the Thames between Richmond Bridge and the railway bridge, I was pleased to count approximately 25 cormorants perched on their willow tree, facing the sunset and opening their wings to dry them.

In past years, I used to count more than 30 of the birds at sunset, but that number has dwindled more recently, so I was pleased by this evening's 'cormorant count'.

On a summer evening especially, the cormorants put on a free flying display, swooping off their tree, low across the water with their slow wing movement, before soaring up as they approach one of the bridges, then turning, swooping back low and gliding up to their perch in the tree.

Those of us in the Kew Road/Old Deer Park area have been able to enjoy recent blackbird performances at dusk. The clarity and variety of the notes are remarkable - real virtuoso singing. Aircraft on flightpaths for landing only interrupted the performers occasionally and, thankfully, the wretched squawking parakeets seemed to be bothering some other neighbourhood.

Yours faithfully

Jonathan Haydn-Williams  
Jocelyn Road  
Richmond

# POLICE LIAISON GROUP MEETING

Wednesday the 19th of  
March, 7pm, Day Centre,  
Barnes Green, SW13 9HE



METROPOLITAN  
POLICE



## Kick off the seeding season with a free seed swap

Borough of Richmond Allotment Group

Residents are invited to join the Borough of Richmond Allotment Group (BRAG) this Saturday 1 March for fun day of seed-swapping and sharing gardening experience with other green-fingered enthusiasts.

Come along and collect a variety of seeds to get your garden started this year, bring your excess seeds to swap for new ones and connect with other garden lovers. You don't need to bring your own seeds to come find something to grow, but if you have seeds to swap, please bring them in labelled packets for easy identification.

- **Date:** Saturday 1 March 2025
- **Time:** 12 noon to 3pm
- **Location:** York House (Winter Garden Room), Twickenham, TW1 3AA



Entry is free for all, but donations are welcome. A raffle will take place at 2.30pm with exciting prizes!

If you'd like to volunteer to help at the event, contact the organisers at [richmondseedswap@gmail.com](mailto:richmondseedswap@gmail.com).

In Richmond upon Thames, we as the Council take overall responsibility for managing allotments and work closely with BRAG, which is made up of representatives from different allotment sites. Find out [more about allotments](#).



# Fuller's to acquire The White Swan, Twickenham

Fuller, Smith & Turner PLC is delighted to announce that it has exchanged contracts to purchase the freehold of The White Swan – a fantastic, and well-known, Twickenham riverside gem. The purchase is due to complete on 19 March 2025.



As well as having stunning views, the pub is a pre and post-match favourite for Twickenham rugby goers, and has a great reputation that stretches far and wide. It is a very well-known pub and has been named as one of the 30 best pubs in Britain by The Times newspaper.



Fuller's Chief Executive, Simon Emeny, said: *"I've always thought that The White Swan is the best pub in Twickenham, outside of our existing estate – so I'm delighted to be bringing it into the Fuller's family. We are famous for having some of the most iconic pubs in the country and this is no exception.*

*"The White Swan has been brilliantly run for many years and I can't wait for us to play a part in its continued success. This is great news for Fuller's and for The White Swan – and I'm looking forward to sitting in the garden, enjoying a perfect pint of London Pride, while watching the river go by. What could possibly be more idyllic?"*

*"The White Swan has been brilliantly run for many years and I can't wait for us to play a part in its continued success. This is great news for Fuller's and for The White Swan – and I'm looking forward to sitting in the garden, enjoying a perfect pint of London Pride, while watching the river go by. What could possibly be more idyllic?"*



# News from Holy Trinity Twickenham

## Holy Trinity Quiz Night - Saturday 1st March

There are just a handful of tickets left for the Big Quiz this Saturday, but there's still time to sign up for one of the remaining places. Tickets are £10 per adult, to include a fully stocked card/contactless bar, nibbles and of course a fantastic range of questions from our very own quizmaster Giles. [Click here to reserve your tickets for the Big Quiz](#) today

## Funeral of the Late Reverend Alun Glyn-Jones

It is with sadness we report the passing of Rev. Alun Glyn-Jones, former vicar of St Mary's Twickenham. In his retirement, he often worshipped with us at our 9:00am Communion service. His funeral will take place at 11 am on Saturday, 8 March in St Mary's Church.



# THE GREEN POP UP CAFE

THURSDAYS

10.30-12.00

The Green Room  
Holy Trinity Twickenham  
Twickenham Green  
TW2 5TS



A community space where  
everyone is welcome to pop in  
for refreshments, friendly chat and activities



HOLY TRINITY TWICKENHAM



# Next week at Richmond Council

On Tuesday evening, the **annual budget meeting** is scheduled to take place. The primary item on the agenda is the formal setting of the council tax for 2025/26, followed by departmental budgets, pay policy, public questions, member questions, and to confirm the appointment of Andrew Travers (currently interim Chief Executive at Southampton City Council) as the Interim Chief Executive and Head of the Paid Service for an interim period of 18 months. The meeting will start at 7 pm, York House, Twickenham.

For full details, please follow the link [HERE](#)

## How to participate

Public questions need to be received no later than 12-noon on the day before the Council meeting (usually a Monday). For full details please click [HERE](#)

# Interim Chief Takes Over Richmond

In a surprise move Andrew Travers is set to take on the role of interim Chief Executive for both Richmond and Wandsworth Councils.

This appointment follows closely on the heels of significant electoral blunders that have beset both boroughs, prompting many to question the rationale behind this leadership change.

Travers, who previously served as Chief Executive of Barnet Council, is no stranger to controversy. In 2016, an administrative error led to approximately 500 to 600 voters being turned away from polling stations in Barnet during the mayoral and London Assembly elections.

The root of the fiasco was incomplete electoral registers dispatched to 155 polling stations, effectively disenfranchising hundreds of residents on election day. This oversight culminated in Travers stepping down from his position by “mutual agreement” shortly thereafter.

Ironically, the vacancy that Travers is poised to occupy arose from a series of electoral blunders in Richmond and Wandsworth.

In the 2024 General Election, an astonishing 6,558 votes were inexplicably excluded from the Putney Constituency count, while an additional 688 votes went unaccounted for in the Richmond Park and North Kingston constituency. These blatant errors eroded public trust and cast a long shadow over the councils’ commitment to democratic integrity.

Councillor Gareth Roberts, Leader of Richmond Council, expressed optimism about Travers’ appointment, stating: *“Andrew brings a wealth of experience across the public service and in leading large-scale transformation.”*



# Tennis star and television presenter Annabel Croft joins Friends of Richmond Park as patron

From The Friends of Richmond Park

The Friends of Richmond Park is delighted to announce that Annabel Croft has been appointed as a patron of the charity.

The former British Number 1 tennis player, known to millions for her tennis commentary for the BBC, Sky TV, Eurosport and Amazon Prime and television presenting, joins its distinguished patrons, Sir David Attenborough, Clare Balding and Baroness Susan Kramer.

Annabel lives near Richmond Park, calling Richmond Park her “happy place” and “my sanctuary”.

*“Richmond Park is very close to my heart, having spent so many happy times there. Its natural beauty and serenity have brought me and my family so much joy. I am delighted to be able to help Friends of Richmond Park continue their work to preserve and protect this precious jewel in the crown of our community,”* said Annabel.



Roger Hillyer, Chairman of Friends of Richmond Park said: *“We are thrilled that Annabel has agreed to become a patron of Friends of Richmond Park. Her love of the Park and desire to ensure it continues to provide an unspoilt sanctuary for wildlife and visitors will be invaluable. All of us in the Friends look forward to working with her.”*

Find out more about [Friends of Richmond Park](#).



## Help us create a new transport strategy for Richmond

From Richmond Council

We need your input to develop the Richmond transport strategy 2040. This strategy will guide the development of long-term, sustainable, and inclusive transport improvements across the borough.

Our goal is to address the emerging needs of residents, businesses, and visitors over the next 15 years.

You can find more information about the current status of transport in the borough by [visiting the dedicated transport strategy website](#). Here you can take our survey and share your concerns on our interactive map.

Your feedback on areas such as connectivity, accessibility, air quality and environmental impacts will help us shape the long-term goals for transport in Richmond.

Have your say by May 2025 and join us in creating a transport strategy fit for the future. [Share your ideas today](#)



## Some Flipping Good Ideas for Shrove Tuesday

Next Tuesday is Shrove Tuesday, or Pancake Day as it has become more widely known. It marks the start of Lent. Here are a couple of ideas for you if you fancy going out for a treat on Tuesday, and also some great recipes (one of which is of particular note if, like me, you listen to The Archers on Radio 4)

Ottolenghi in Richmond is open! It opened this week and here are some links to recipes with an Ottolenghi twist. **Savoury lovers, rejoice** – *Grilled pancakes with harissa cabbage and taleggio* bring the perfect melty, gooey bite. Recipe [here](#) **Sweet with a twist** – *Pancakes with maple brown butter apples and sesame praline* take indulgence to the next level. Recipe [here](#) or available at the deli's. Prefer to let someone else do the work? Head to an Ottolenghi deli (Hampstead, Islington, Spitalfields, or **Richmond**) for a stack of flavour-packed pancakes.



In Teddington **The King's Head** is offering a zesty dessert next Tuesday. They'll be serving zesty, fiery *Crêpes Suzette* to share. You'll enjoy Lemon & orange-infused pancakes, drizzled with Cointreau sauce, garnished with orange segments and flambéed tableside with Cointreau. Served with Jude's Vanilla Ice Cream – it sounds like a flipping fiery treat!

Whether it's classic batter, fruity variations, or extra-light and airy pancakes, home cooks are getting ready to flip, stack, and serve up their favourite creations. Here below are some links to some great online recipes that will give you inspiration, but before that, in honour of The Archers, I couldn't resist sharing this recipe from Miele for these **Fluffy Japanese Soufflé Pancakes**

### Fluffy Japanese Soufflé Pancakes

- 150g self-raising flour
- ½ tsp baking powder
- ¼ tsp bicarbonate of soda
- ¼ tsp sea salt
- 1tbsp. vegetable oil
- 180ml whole milk
- 2 eggs, divided
- 2tbsp. caster sugar
- ¼ tsp. white wine vinegar
- Oil spray



1. Combine the flour, baking powder, bicarbonate of soda and salt in a bowl. Add the milk, egg yolks, oil, whisk well and set aside until needed.
2. Using an electric whisk, start whisking the whites and the vinegar and when frothy, add the sugar a little at a time until fully incorporated.
3. Gently fold in the whites into the batter and set aside.
4. Using a large non-stick frying pan over a low heat, grease two non-stick crumpet rings and place them in the pan. Fill the rings about two thirds full with the pancake batter, put a lid on and cook for about 10 minutes on a very low heat.
5. Flip the rings very carefully and cook for an extra two minutes.
6. When ready, keep warm and serve with cream and maple syrup, or whipped coconut cream, ground cardamom, passion fruit and coconut chips.

Miele has the essentials covered with a foolproof [American Pancakes](#) recipe. For those with a sweet tooth, Dualit's [Fresh Lemon Pancakes and Breakfast Blinis](#) are a decadent choice and also vegan. Meanwhile, for those who prefer savoury dishes, STAUB and Naturally B's [Salmon and Avocado Crêpes](#) will go down a treat. And for an easy plant-based or gluten-free option, STAUB and Naturally B's [Banana and Berry Pancakes](#) recipe ticks all the boxes.

# The Experience Package

Enjoy an exciting day out with the dolphins, a dinner under the stars and unwind in your extra comfortable king size bed.



Package includes:

- Dolphin trip for 2®
- Dinner for 2®
- Bottle of cava at arrival
- Total £280.00

Terms & Conditions: offer subject to availability

[reservations@sunborngibraltar.com](mailto:reservations@sunborngibraltar.com)

sunborn  
**GIBRALTAR**  
YACHT HOTEL RESORT





# It's Never Too Late To Have A Bit Of Fun!!

By Bruce Lyons



*Dear Bruce, we are having a wonderful time!*

So here's a note for our intrepid Golden Oldies!

As you read this, fingers crossed, our Adventurous Intrepid Octogenarians will be on the last leg of their amazing expedition! Many of our readers will know Charmian, from the days she was at the Rossslyn Road Surgery in East Twickenham – in fact for a while she was our family doctor too!

Ed managed the booking, often telling me he preferred to travel cheap, he like sort of backpacking (at their age!) he had rented Junks in Indonesia, not the sort Joanna Lumley had on her BBC Spice Trail – a real junk.

Often saved loads of dosh on flights to the states, flying via Goodness knows where – with no hold luggage! He said it was a sort of addiction – saving money I mean! So it was a bit of a struggle to make if a bit more comfortable, given their years! Initially, it was to be a sailing yacht round the Islands and I thought something with just a bit more space would be kind, restful and with more crew you get experts on all the wildlife and excursions. In the end the international flights were BA and Iberia and yes, hold baggage. Since they left nearly 3 weeks ago, I have spent a small amount of time just double checking the next stage was still all intact – but seems I shouldn't have worried! They are just wonderful travellers and an inspiration to us all.

*Ed has not brought his computer and his phone is broken so I'm writing.*

*First off Hurtigruten was perfect for us. They are an excellent group and I personally appreciated the help they gave to all the oldies who had difficulties getting in and out of boats and so on. The food was wonderful, the choices of venues for seeing the wildlife excellent and we made a lot of friends.*

*The days in the Porto Aroya were very good. We did a lot of swimming and snorkelling, but what was really good was being part of the local community on the beaches and in the town. Lots of grandparents, parents and toddlers enjoying their own beaches. We only gave the hotel one chance at a meal. It was poor, but next door was the 'Point' with the best food ever. We could watch the small sharks swimming around below us as we ate.*



*No problem getting to Quito, a bit of a set back by a receptionist who swore we had cancelled, and then wanted to put us in a room upstairs with no help with our cases. I put my foot down and stood there playing the old lady with a stick and we got a ground floor room with the most peculiar shower I have ever seen.*

*Smoothly from there to Coca, and met our guide Livio who is a charming and knowledgeable Quechua.*

*The Lodge is beautiful, the canoe ride there exciting, and after lunch we were taken on a quiet canoe trip through little byewaters. We were both bowled over with the beauty and peace. I felt an almost heightened sense of being. Sad that we do not have long here, though I did find the jungle walk quite hard.*

*Thank you very much for all your complex arrangements.*

*Very best wishes, Chum.*

# Clap for the Wonderful NHS

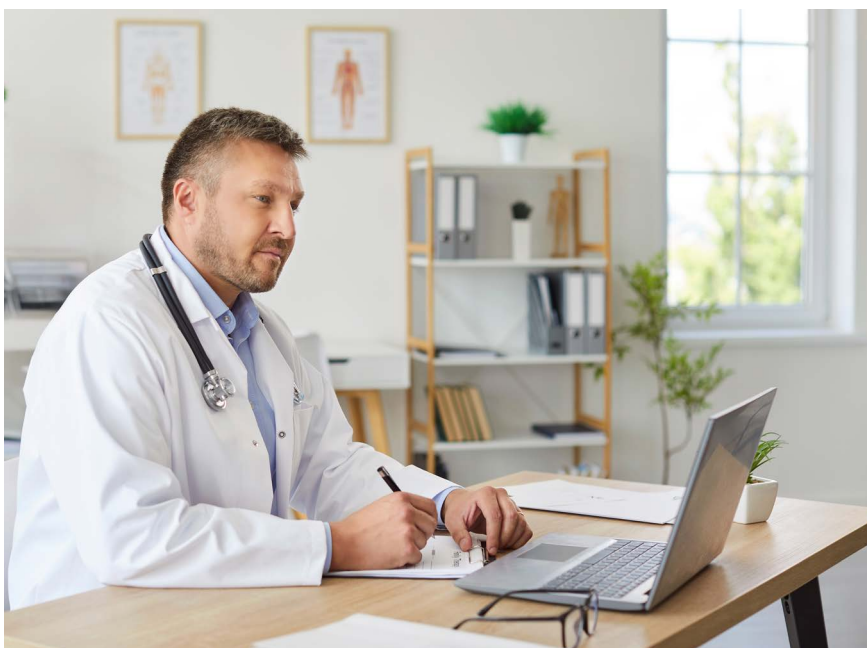
Teresa Read

We will all remember that during Covid we were encouraged to go outside and clap for the wonderful NHS; at the beginning of Covid we were reliant on overworked NHS staff with no vaccines available. Some of the unlucky ones who went to hospitals for other medical problems caught Covid during their visit.

Now we are past those early times and have vaccines regularly administered and helpful pharmacists who fill the gaps left by the local doctors' surgeries.

However, we do not seem to be back to the pre-Covid situation regarding some doctors' surgeries. It is not that they are not providing a service but are they providing what people want and when they need it?

It appears from information sent in by one or two readers that surgeries are requesting people to come along for "unwanted" tests as well as being asked to take tests themselves and provide information to be forwarded by email or online forms. But how many of the older population can take their own blood pressure, etc. and transfer it to an impersonal organization?



This week the Tribune received complaints from readers about the invasiveness of the aforesaid requests.

Are registered patients expected to provide information to assist in diagnosing their own condition and how much vital information can be missed by the traditional face-to-face discussion with a qualified family doctor?

It also looks like some residents have been directed to go to local hospitals for minor conditions that could easily be dealt with on the phone by medical staff. For example, to obtain a prescription for a known condition.

We know from the news that hospitals are full of people needing treatment, some with minor problems and others in life threatening situations. A search on Google tells us *"The NHS standard is for 95 per cent of patients to be seen within four hours, however, the average waiting time can exceed eight hours in a lot of hospitals."*

The thought of going to hospital, and sometimes intrusive routine examinations at doctors' surgeries, may fill many of us with dread. Can we bring back the old-style family doctors and hospital matrons who kept things running smoothly?



# The Stick that Stuck...

By Deep Patel

~ Through the Eyes of a Twickenham Shopkeeper ~

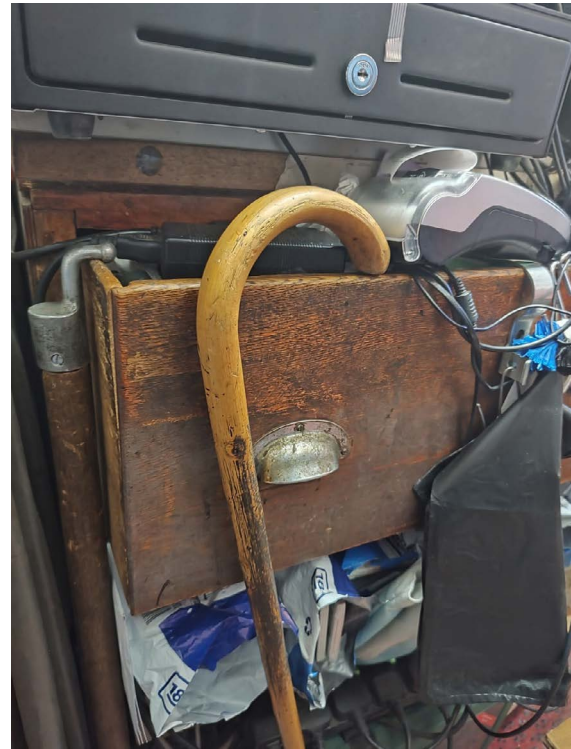
How many people reading this right now use a walking stick, or are familiar with one? Well “stick around” and keep reading and you will find out a little known story about our shop...and a walking stick...

For those of you that may not know, my parents first opened Meet & Deep Newsagents (our shop) nearly 40 years ago when they were both still teenagers (they still look the same...well nearly-ish) and when they took over the shop from the previous owner, the previous owner thought it would be a good idea to stay with my father and mother on their first day (to make sure they don't make any mistakes and fully understand the functioning of the shop, how to operate the till, turn off the lights and lockup the shop etc).

The day soon passed by and my father and mother had learnt a lot about our shop and the procedures surrounding every aspect of shop life. The day came to a close and the previous owner did the final honours of handing my parents the keys to the shop and then said goodbye. The previous owner was about to leave and then he turned back, came into the shop and headed towards the shop counter again. My parents were confused as to why he came back...the previous owner then went behind the counter and reached to the drawer...my parents watched in anticipation...the previous owner then reached around the side of the counter drawer and unhooked a little curved walking stick and said “a little old lady was in here yesterday and after doing her shopping, she left her walking stick here in the shop, so promise that you will keep it behind the counter until she comes back for it will you?”. My parents agreed and promised that they would do as he had requested them to and keep the stick hanging behind the counter until the little old lady came back for it... another day passed and the old lady still didn't come back to collect the stick that she had left behind. The week came to an end and still...she had not come back to collect her stick...a fortnight passed by and the stick remained unclaimed, hanging on the edge of the shop counter drawer still. A full month passed, the lady still hadn't stepped back into our shop...but my parents had made a promise to the previous owner that they would leave the walking stick there until the old lady came back, and they didn't want to break their promise.

Today, nearly 40 years on, that very stick is STILL hanging in the exact same place that it was the day that they took over running the shop for the very first time...not a single day goes by where we don't look at that stick and think about the little old lady who left it there nearly 40 years ago...she would have been approximately 130 years old today...but every now and again I tell my father that I don't think the lady is coming back now, and that maybe it's time to move the walking stick to the stock room shed now. My father always replies, even today “it may just be a stick, but a promise is a promise...we promised the previous owners that we would keep that walking stick there until the lady came back...and so we will”...

Today at Meet & Deep Newsagents, that walking stick is the oldest item in the shop, as well as being the only item in our shop that has been there since the very first day that we opened up the shop for the first time ever...and long may it stay there...



**Remember...**

**“...A promise is still a promise...”**

## **MY CREATURE-KINDNESS TIP OF THE WEEK...**

STOP ANY INSECT KINDLY without killing (FOR GOOD KARMA): Sprinkle pure essential peppermint oil, Olbas oil, fine black pepper or white vinegar around places where you don't want them to come (but NOT directly on them) ...they will go without you having to harm them. For ANY specific tip to stop any “pest” or insect KINDLY (for good karma/blessings), email me: [InsectLoversUnite@gmail.com](mailto:InsectLoversUnite@gmail.com) or join my Facebook page: “INSECT LOVERS UNITE”

# The Shark is Broken

by Ian Shaw and Joseph Nixon

Kenny Wax at the Richmond Theatre and on tour until 17<sup>th</sup> May

*The Shark is Broken* takes place on the film-set of *Jaws* in 1974, and depicts the day to day life of the film's main three (human) actors. Although there are poignant and reflective moments, there is plenty of banterous dialogue between all three, which makes for an intriguing experience witnessing people trying to stay sane and normal in quite a bizarre situation.

Each of the three performances are strong and powerful, and together they provide an interesting dynamic that really makes ninety minutes sail quickly by.



Ian Shaw, playing his father Robert, captures his father's rugged eccentricity in an anticipatory compelling way. After crashing into proceedings in energetic, bombastic fashion he later delivers some of the plays most introspective and poignant moments.

Ashley Margolis has the difficult task of portraying Hollywood stalwart Richard Dreyfuss at the start of his career. He approaches the role as a wide-eyed wanderer, but captures the young Dreyfuss' self-doubt and self-discovery at the cusp of his growing legend.

Amongst them, Dan Fredenburgh as Roy Scheider is the balancing piece, as a steady presence and reasonable character in an unreasonable situation. Fredenburgh's calm and insouciant delivery infuses the surreal setting and characters with a basic real world, everyday feeling.

The dialogue contains moments of little winks and nods to future events. It is joked amongst the three that Spielberg might even be crazy enough to take on a topic like dinosaurs in a later film, if Nixon will make for a good president and Shaw being against the idea that his son (ie. the man speaking the line) will one day become an actor.

The staging is quite simple in that it all mainly takes place in and around the ship's cabin, but with the wide stage it highlights the isolation and the idea that the three feel stuck in their endeavour until the shark is repaired and the job can be completed.

For any fans of Spielberg, *Jaws* and old-school Hollywood *The Shark is Broken* is a must, but also for anyone looking for an enjoyable show with fun dialogue it dives delightfully deep.



Read Denis Valentine's review at [www.markaspen.com/2025/02/21/shark-broken-rt](http://www.markaspen.com/2025/02/21/shark-broken-rt)

Photography by Manuel Harlan



# The Koala Who Could

by Rachel Bright, adapted by Emma Earle

Nicoll Entertainment at the Rose Theatre, Kingston, then on tour until 2<sup>nd</sup> September

“Koala bears live upside down in Australia and eat eucalyptus leaves” announced my eight-year-old grandson with great authority as we went along to see *The Koala Who Could*.

This children’s show is adapted from the best-selling book by Rachel Bright, who has written over thirty children’s books, selling eight million copies in forty languages. Her colourful stories include [The Lion Inside](#), and an increasing menagerie of animals, squirrels, pandas, camels and wolves.



Our hero is a tree-hugging marsupial, Kevin the Koala, a cuddly puppet with big round fluffy ears and a black oval nose. The story follows Kevin, and his friend the swaggering rugby-playing Wombat, as the koala reflects on the wider Australian outback beyond his comfy hammock. Being a cautious bear, Kevin doesn’t like change until he learns that to step outside his comfort zone and to take risks can bring rewards.

Hence, the message of this inspiring story, is to encourage children to embrace change and overcome their worries. Boisterous moments come with the scenes encouraging audience participation. The children respond noisily with “Let go of the branch, Kevin” when Kevin is about to change from the Koala Who Could into the Koala **who can**.

Three nimble actors, Christopher Finn as Kevin, Danny Hendrix as Wombat and Sarah Palmer as Cassowary not only play the parts of their characters, but are also expert puppeteers, illusionists, vocalists, dancers and storytellers with an in-built ability to interact directly with the children.

Eamonn O’Dwyer’s musical score and lyrics are integral to the action, starting with the rousing opening number about the dawning day. The sequence, *Bush Rush Hour*, is also exhilarating with its perplexing array of different animals. And the finale is the upbeat toe-tapping *Can Do*, cautioning “do not leap before you look, but once you’ve thought it through.”

Director Emma Earle successfully captures the book’s fun, and brings its illustrations to vivid life. The dialogue reflects its gentle rhymes such as “In a wonderful place, at the beginning of dawn, where the breezes were soft and the sunshine was warm.”



*The Koala Who Could* is clearly appreciated by its young fans as it bursts into life with energy, music and colour. “Told you so” said my grandson proudly afterwards, and indeed he was right.

Read Steve Mackrell’s review at [www.markaspen.com/2025/02/18/koala-could](http://www.markaspen.com/2025/02/18/koala-could)

Photography by Pamela Raith

## Cruel Intentions

By Jordan Ross, Lindsey Rosin and Roger Kumble

Bill Kenwright at the New Wimbledon Theatre until 1<sup>st</sup> March, then on tour until 28<sup>th</sup> June

For someone who hasn't seen the 1999 cult-classic film that *Cruel Intentions* is based on, nor any of the multiple adaptations of the origin story, the 1782 French novel *Les Liaisons Dangereuses*, there should be a reminder to take the small print seriously. This jukebox musical has trigger warnings of "strong language, and mature themes including explicit sexual language and behaviour, racial discrimination, drug usage, abuse, accidental death, question of consent". Phew!



The main protagonists, hedonistic Sebastian and Kathryn, step-siblings residing in a Manhattan luxury mansion, weave a scheme of depravity that would make Jeffrey Epstein proud. This is the substance of both a psychoanalyst's case study and a safeguarding referral to children's social services.



They wager a bet that Sebastian can seduce the headmaster's daughter Annette, who has publicly published her chastity essay, whilst also seeking revenge on Kathryn's ex sex-buddy by also popping the cherry of his new love interest, naive and immature Cecile. Along the way, they recruit gay classmate Blaine into their scheme of entrapment and blackmail of closeted Greg. Cello teacher Ronald is not spared and also becomes collateral damage, and in the end the collective body count is lost.

Leading actors, Will Callan and Nic Myers triumph in their portrayal of the psychopathic pair, and their particularly strong vocals are showcased in 1990's anthems, especially *Torn* and *Losing my Religion*. The absurdity of some of the musical numbers juxtapose the other characters' playfulness into this twisted tragic tale, including Luke Connor Hall and Joe Simmons as Blaine and Greg, who camp up an extremely memorable rendition of Spice Girls' classic *Wannabe*.



Polly Sullivan's set design showcases the opulence of their surroundings, although there could have been more differentiation between the various settings by use of lighting effects, a technique that is highly successful in the Penn Station scene.

No matter how fun and well-chosen the songs are to seamlessly fit the story line, the problematic content is uncomfortable, including peer-on-peer sexual grooming, manipulation and coercion, plus borderline sibling incest. Although this semi-morality tale doesn't spare the female lead from being publicly shamed, her comeuppance is quickly forgotten when the cast perform a medley of 1990's bangers after the final bows.

Read Thea Diamond's review at [www.markaspen.com/2025/02/26/cruel-intent](http://www.markaspen.com/2025/02/26/cruel-intent)  
Photography by Pamela Raith

Read Thea Diamond's review at [www.markaspen.com/2025/02/26/cruel-intent](http://www.markaspen.com/2025/02/26/cruel-intent)

Photography by Pamela Raith



Richmond  
OPERA



Orfeo  
monteverdi

**APRIL 2025**

**FRIDAY 25<sup>TH</sup> 19:30**

**SATURDAY 26<sup>TH</sup> 19:30**

**SUNDAY 27<sup>TH</sup> 14:30**

**NORMANSFIELD THEATRE, TEDDINGTON TW119PS. TICKETS £24, UNDER 18's £12.**

**BOOK NOW ON [TICKETSOURCE.CO.UK/RICHMONDOPERA](https://www.ticketsource.co.uk/richmondopera) OR CALLING 0333 666 3366.**

**ORFEO, ENGLISH TRANSLATION BY ANNE RIDLER, ED. JOHN ELIOT GARDINER BY ARRANGEMENT WITH CHESTER MUSIC.**

# Barnes Safer Neighbourhoods Team

## Crime Update March 2025

For the past four weeks, where has it happened?

### **Burglary X0**

#### **Vehicle Crime X4**

- Attempted theft of motor vehicle, 15/2-16/2, 01:00-07:00 hours, Melville Road, SW13.
- Theft from motor vehicle, 19/2, 19:00-20:00 hours, Ranelagh Avenue, SW13.
- Theft from motor vehicle, 19/2-20/2, 12:00-09:30 hours, Church Road, SW13
- Theft from motor vehicle, 22/2-23/2, 23:00-00:00 hours, Nowell Road, SW13.



#### **Criminal Damage X2**

- Attempted criminal damage to vehicle damage is under £500, 2/2, 22:18 hours, The Hermitage, SW13.
- Criminal damage to dwelling where value of damage is £500 or over and under £5000, 26/2, 19:20 hours, Laurel Road, SW13.

#### **Robbery: X0**

#### **Violent Offences X0**

(For awareness violent offences also include incidents that have occurred in a household otherwise known as a domestic incident).

#### **Drugs X0**

(For awareness these are not drugs that have been found on the ward but drugs that have been stopped by UK border force with a postal address destination to Barnes).

#### Officers covering Barnes

PS Michael Hirsch  
PC Darren Meakins  
PC May Moody  
PCSO Matthew Morbey

*We had good attendance at our previous Police Liaison Group Meeting the next PLG is confirmed for Wednesday the 19<sup>th</sup> of March 2025, 7pm, situated at the Day Centre, Barnes Green, Church Road, SW13 9HE. Any in advance questions please email myself or the PLG chair: [bplgchair@gmail.com](mailto:bplgchair@gmail.com) Or you can send us an email to [Barnes@met.police.uk](mailto:Barnes@met.police.uk)*

Or for enquires you can call 02078072014

**ALWAYS 999 FOR EMERGENCIES**



**METROPOLITAN  
POLICE**



# St Mary's University

## St Mary's Signs Research Partnership Agreement with Cirque du Soleil

St Mary's University, Twickenham (SMU) has partnered with Cirque du Soleil, the world's largest contemporary circus producer, to conduct research that investigates the physical performance characteristics of the show's acrobatic artists.

St Mary's University, Twickenham (SMU) has partnered with Cirque du Soleil, the world's largest contemporary circus producer, to conduct research that investigates the physical performance characteristics of the show's acrobatic artists.



“[Corteo](#)” is one of Cirque du Soleil's longest running shows and has recently had a 10-week residency at the Royal Albert Hall in Kensington.

The performance medical staff at [Cirque du Soleil](#) approached St Mary's as they were interested in quantifying the physical characteristics of their artists and how these changes over the course of a 10-week show.

Dr Alex Bliss, Associate Professor in Strength and Conditioning at SMU and Lead Researcher said,

*“We are really excited to be working with Cirque du Soleil. This opportunity came to us through a recent graduate from the [MSc in Applied](#)*

*[Strength and Conditioning Science](#) where I am Course Lead.*

*Considering the visual complexity and physical intensity that is apparent when watching the performers in the show, relatively little objective data is available that describe aspects of their physicality such as their strength and/or power characteristics. Even less is known about what effect repeated performances for extended durations has on these physical qualities.*

*“Given the performers often complete multiple shows each day and have limited time off when in residency, it makes for an interesting research environment.*

*My colleagues Shaun Joffe and Sam Callaghan (Senior Lecturers – Strength and Conditioning) and I had the opportunity to spend some time at the Royal Albert Hall with the artists and collect data.*

*“We hope our findings will be interesting and useful, allowing for the artists and their performance support staff to have objective information to support their decision-making processes.*

*We are excited by this introductory project and hope to have a long and fruitful relationship with Cirque going forward.”*



St Mary's  
University  
Twickenham  
London

# New STEM Centre Opens with the Mayor of London's Support at Richmond Upon Thames College

Richmond Upon Thames College is today (25 February 2025) celebrating the opening of its cutting-edge Science, Technology, Engineering, and Maths (STEM) Centre.



Guests from education, industry, the GLA, and local government (including the Mayor of Richmond, Cllr Richard Pyne and Ayo Akende, Assistant Director of Skills and Employment - Delivery, GLA), joined a vibrant opening event to explore the inspiring new space – which is now providing students with access to world-class resources and training opportunities in science and tech.

The STEM Centre is funded and supported by the Mayor for London. It is an outstanding hub for innovation and learning, offering a state-of-the-art environment for students pursuing

careers in science, engineering, construction and computing.

With a focus on practical and theoretical learning, the centre is helping to bridge the gap between education and industry needs.

Students at the College are benefiting from:

- Advanced training facilities equipped with the latest technology
- Opportunities to develop scientific talent through BTEC courses, A Level and Higher National routes
- Specialised courses in high-demand fields such as biology, chemistry, and medical sciences
- Carpentry, plumbing and engineering workshops, which are set up with industry-standard equipment for students to use in practical lessons
- Speciality computing rooms and science labs
- Forensic and crime scene rooms.

Howard Dawber, Deputy Mayor of London for Business and Growth, who visited the campus earlier in January, said: *“London’s colleges play an essential role in developing the leaders of tomorrow, and this new state-of-the-art STEM centre will equip learners in Richmond Upon Thames with the industry-level skills needed to secure good jobs.”*

*“This outstanding new campus is part of a wider transformational project, to which the Mayor of London has provided £36.6m funding to help train and upskill Londoners, as we continue working together to build a better and more prosperous London for all.”*

Richmond Upon Thames College, Principal, Gavin Hughes, led a series of tours of the new space. He said: *“We’re proud of the new STEM centre, it is providing students with the perfect, modern environment to develop outstanding skills required to excel in rapidly evolving science and tech industries.”*

Keith Smith, HRUC Chief Executive, said, *“The STEM Centre is an inspiring hub for innovation and learning – it adds to our portfolio of brilliant spaces across the HRUC Group. We’re delighted to have the support of the Mayor of London to deliver an exceptional environment for students pursuing careers in science, engineering, construction, and computing, equipping them with the skills to shape the future.”*



**Richmond upon  
Thames College**

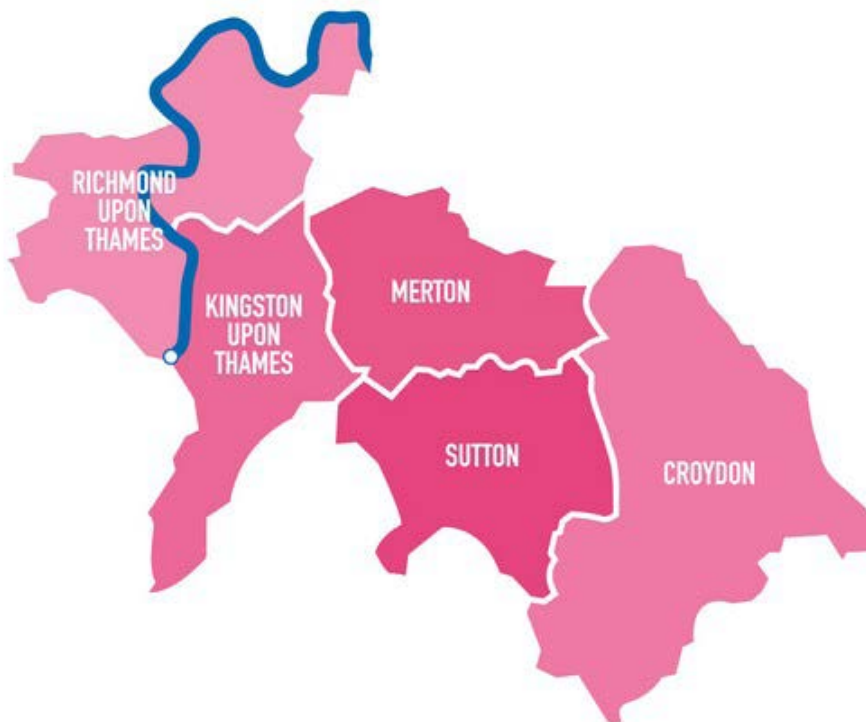


# South London to Drive Growth Under New London Plan

South London council leaders have today welcomed the London Growth Plan, the capital's roadmap for economic growth over the next decade.

The long-awaited plan recognises that London's continued growth depends on strong, connected local economies across the city – not just in the centre.

It follows the Mayor of London's commitment to creating 150,000 new high-quality jobs by 2030 and returning London to pre-financial crisis growth rates, generating an extra £103 billion for the Treasury and putting £20,000 more in Londoners' pockets over the next 10 years.



South London is already powering this growth, with leading research hubs, fast-growing creative industries, top universities, and world-class visitor attractions.

The South London Partnership (SLP) – a coalition of the boroughs of Croydon, Kingston, Merton, Richmond, and Sutton – welcomed the plan's focus on local economic hubs and innovation-led growth.

Councillor Gareth Roberts, Chair of the South London Partnership and Leader of Richmond Council, said:

*“South London is a powerhouse of talent, innovation, and enterprise – driving growth across frontier industries, professional services, creative sectors, and environmental research. The London Growth Plan rightly recognises that London's future success depends on strong local economies like ours”.*

South London, home to more than 1.2 million people, drives a £30 billion economy, supporting 550,000 jobs and 55,000 businesses.

It is a hub of innovation, hosting world-class institutions like the London Cancer Hub, Kew Royal Botanic Gardens, and the National Physical Laboratory, alongside iconic sporting landmarks and tourist attractions such as Twickenham Stadium, Wimbledon's All England Club, Selhurst Park, Chessington World of Adventures and Hampton Court Palace.

With some of the UK's landmark parks and green spaces, South London is a sought-after destination to live, work, and invest.

The sub-region is already driving London's economy forward through:

- Powering innovation – the SLP's BIG South London programme, since January 2021, has added more than £32 million GVA to the local economy by supporting over 850 businesses and organisations, leveraging over £10 million in additional investment for research, development, and innovation, creating over 900 new jobs, developing more than 150 new products and services, and fostering over 200 collaborations between universities and businesses.
- Attracting investment – with a dynamic mix of industries, strong local economies, and booming high streets, South London is a driver of London's broader economic growth.
- Driving the visitor economy – from international sporting events to cultural landmarks, South London's tourism and hospitality sectors make a major contribution to London's global appeal.
- Delivering new homes – meeting London's housing needs to ensure the capital has the skilled workforce to drive future growth.

While South London is already delivering on many of the ambitions in the London Growth Plan, leaders are calling for:

- Better transport links – improved orbital connectivity across South London to unlock new economic opportunities, reduce congestion, and better connect businesses with local talent.
- Faster, more reliable digital infrastructure – high-quality digital connectivity essential for business growth, education, and innovation in the modern economy.

Councillor Roberts added:

*“The London Growth Plan sets out an exciting vision – and South London is key to making it happen. We are ambitious for our future to ensure growth is truly inclusive and sustainable.”*

*“To fully deliver on this vision, we will also need investment in infrastructure – better transport and stronger digital connectivity – so businesses, workers, and communities can fully benefit from future opportunities. We look forward to working with partners across London to make this vision a reality.”*

This spring, the South London Partnership will release its own ambitious growth plan, outlining how the sub-region will continue to drive investment, innovation, and long-term growth for businesses and residents.





# A VIP visit to Princess Alice Hospice

Richard Meddings, Chair of NHS England and Duncan Burton, Chief Nursing Officer for England, visit Princess Alice Hospice



On Thursday 20 February Princess Alice Hospice welcomed Richard Meddings, Chair of NHS England, and Duncan Burton, Chief Nursing Officer for England and valued trustee, to Princess Alice Hospice. They were joined by Mike Bell, Chair of South West London Integrated Care Board and Toby Porter, CEO of Hospice UK, who provided a national update on the wider hospice sector.

Nigel Seymour, Chief Executive of Princess Alice Hospice said: *'We were delighted to show Richard and Duncan around our beautiful Hospice and introduce them to colleagues from various teams, showcasing the vital support we provide to local people. We're probably known best for our specialist palliative and end of life care at the Hospice, but most of our vital services are provided in the community, in homes or care settings. We know this is how most people want to be supported and that it leads to better outcomes for them and their families, allowing them to make memories and spend precious time together. We appreciated having time to discuss the ways we can continue to work together to provide the best possible palliative and end of life care for local people.'*



A highlight of the visit was when Richard and Duncan took part in an informal 'Ask Richard and Duncan' Q&A session. Clinical colleagues were invited to ask questions about their roles and to share their own experiences of working in the NHS and hospice sector.

Richard Meddings, Chair of NHS England, said: *"It was a pleasure to meet the team at Princess Alice Hospice and learn more about the care and support they deliver at the Hospice and in the community. The difference their valuable work makes to patients and their loved ones at such a difficult time is clear to see."*

Duncan Burton, Chief Nursing Officer for England, said: *"As Chief Nursing Officer for England and a trustee of Princess Alice Hospice, it was great to have the opportunity to speak with nurses, support workers and other colleagues and hear about their experiences, and the care and support they provide to so many patients and families. The visit was also a chance to meet some of Princess Alice Hospice's amazing volunteers who I know make a huge difference not only to patients and families, but also to colleagues."*

Toby Porter, CEO of Hospice UK, said: *"I was delighted to be at Princess Alice Hospice and join the team there in welcoming Richard and Duncan. Hospices and the NHS work hand in hand in communities across the country. Hospices not only provide brilliant care for patients and families, they alleviate pressures on the NHS, particularly acute hospitals, too. We've been so pleased to talk to Richard and Duncan about this partnership, and what more we think the hospice sector can do to support the government's aim to shift care out of hospital into the community."*

Photo L-R: Lesley Munro, Deputy CEO and Director of Patient Care and Communities; Nigel Seymour, CEO of Princess Alice Hospice; Richard Meddings, Chair, NHS England; Duncan Burton, Chief Nursing Officer of England; Toby Porter, CEO of Hospice UK

# England squad update

29 players have assembled in York to begin preparations for the upcoming Guinness Six Nations Test match against Italy at Allianz Stadium on Sunday 9 March (kick-off 3pm GMT).



# RFU

## Forwards:

Fin Baxter (Harlequins)  
Ollie Chessum (Leicester Tigers)  
Alex Coles (Northampton Saints)  
Luke Cowan-Dickie (Sale Sharks)  
Chandler Cunningham-South (Harlequins)  
Ben Curry (Sale Sharks)  
Theo Dan (Saracens)  
Alex Dombrandt (Harlequins)  
Ellis Genge (Bristol Bears)  
Jamie George (Saracens)  
Joe Heyes (Leicester Tigers)  
Ted Hill (Bath Rugby)  
Maro Itoje (Saracens)  
Henry Pollock (Northampton Saints)  
Will Stuart (Bath Rugby)

## Backs:

Oscar Beard (Harlequins)  
Elliot Daly (Saracens)  
Fraser Dingwall (Northampton Saints)  
George Ford (Sale Sharks)  
Tommy Freeman (Northampton Saints)  
Alex Mitchell (Northampton Saints)  
Harry Randall (Bristol Bears)  
Tom Roebuck (Sale Sharks)  
Henry Slade (Exeter Chiefs)  
Ollie Sleightholme (Northampton Saints)  
Fin Smith (Northampton Saints)  
Marcus Smith (Harlequins)  
Freddie Steward (Leicester Tigers)  
Jack van Poortvliet (Leicester Tigers)

## Rehabilitation:

Ollie Lawrence (Bath Rugby), George Martin (Leicester Tigers), Tom Willis (Saracens), Tom Curry (Sale Sharks), Ben Earl (Saracens).



# England U19 Men To Face Scotland At Percy Park RFC

England U19 Men will face Scotland U19s at Percy Park RFC this April as part of their spring programme of fixtures, the RFU can confirm.



The fixture, scheduled for 14:00 BST on Saturday 26th April, is the second match to be announced for the U19 Men in 2025. The Men's Pathway side also welcome Japan U19 to Cambridge Rugby's Ellgia Fields on Saturday 22nd March.

The U19 Men side serves as an avenue for England Rugby pathway players to develop their skillsets with meaningful gametime on the international circuit, with fixtures also giving valuable minutes to players then eligible for U20 selection in the World Rugby U20 Championship. In 2024, England U19 Men suffered a narrow, 24-21 reverse at the hands of France at Doncaster Knights' Castle Park before a comfortable 40-10 win away to Italy.

Andy Titterrell, U20 Men's assistant coach, will lead the U19 Men's programme once again this spring following on from a recent 57-13 victory over Scotland at U20 level in Round 3 of the 2025 U20 Six Nations. Titterrell will be supported throughout with a combination of U18 and U20 Men's coaches and staff to be confirmed in due course.

England U18 Men faced Scotland at Percy Park RFC in 2007, finishing 5-5, as part of preparations for the Rugby Europe U18 Championships.

Andy Titterrell said: *"Having another Men's Pathway fixture in the North East is an exciting prospect following on from a great week in Newcastle with the U20s, capped off with a fantastic win. The support we received from local rugby fans and media was incredibly encouraging and as a group, we anticipate another great trip."*

*"With our spring programme starting to take shape, it's important to reemphasise the significance of these games in creating further opportunities for players who have progressed from the U18 Men's side."*

*"Five of the U19 Men's starting XV that travelled to Italy last April went on to earn caps in the World Rugby U20 Championships in South Africa. The opportunity for development, and to impress whilst doing so, is clear for these players."*

Percy Park RFC Chairman Tim Walker said: *"As a grassroots rugby club, we pride ourselves on youth development to support our club and the wider game of rugby. We welcome the opportunity to host this U19 international at Percy Park RFC and hope that you can bring your friends and family to enjoy what is sure to be a fantastic day."*

General admission tickets are available to purchase for £10 on matchday, with free entry for U18s. Hospitality packages include entry and a two-course pre-match lunch for £25 and are available to be booked via [mick@percyparkrfc.co.uk](mailto:mick@percyparkrfc.co.uk).

## England U19 Men's confirmed 2025 fixtures

- Saturday 22nd March – England U19 Men vs. Japan U19 – 14:00 GMT kick-off
- Saturday 26th April – England U19 Men vs. Scotland U19 – 14:00 BST kick-off

# Highlights, report and reaction: Brentford 1 Everton 1

Written by Brentford Football Club

**Yoane Wissa's 13th goal of the Premier League season cancelled out by Jake O'Brien's header as Brentford draw 1-1 with Everton at Gtech Community Stadium; Thomas Frank: "The performance was not through the roof"**

Yoane Wissa scored his 13th goal of the Premier League season as Brentford drew 1-1 with Everton at Gtech Community Stadium.

Wissa gave Thomas Frank's side the lead in the final seconds of the first half, nodding home from close range after Kevin Schade's long throw-in led to panic inside the Toffees' six-yard box, but Jake O'Brien's header on 77 minutes earned the visitors a share of the spoils.

There was one enforced change to the side that beat Leicester City 4-0 as Yehor Yarmoliuk replaced the injured Christian Nørgaard.



The teams traded speculative efforts during the opening five minutes. Keane Lewis-Potter's strike from 20 yards skipped narrowly wide of Jordan Pickford's right post, while James Garner's attempt from slightly further out sailed over the crossbar.

Idrissa Gueye was the next player to try his luck from distance, but his shot also landed in the west stand.

Brentford carved out two significant chances midway through the half.

Schade picked out Wissa with a deep cross from the right, but the forward's downward header was tame and comfortably held by Pickford.

Moments later, Kristoffer Ajer glanced Lewis-Potter's in-swinging delivery well wide of the target.

Following a quick Everton counter attack, Jesper Lindstrøm's cross narrowly evaded Carlos Alcaraz inside the six-yard box.

Jack Harrison's diagonal ball was headed back across goal by O'Brien and Ethan Pinnock did enough to prevent Beto from getting a shot away.



The game then sparked into life after an uneventful opening half an hour.

Beto only had Flekken to beat after he had capitalised on a slip from Pinnock to latch on to Harrison's through ball, but the goalkeeper raced off his line, stood firm and smothered the shot.

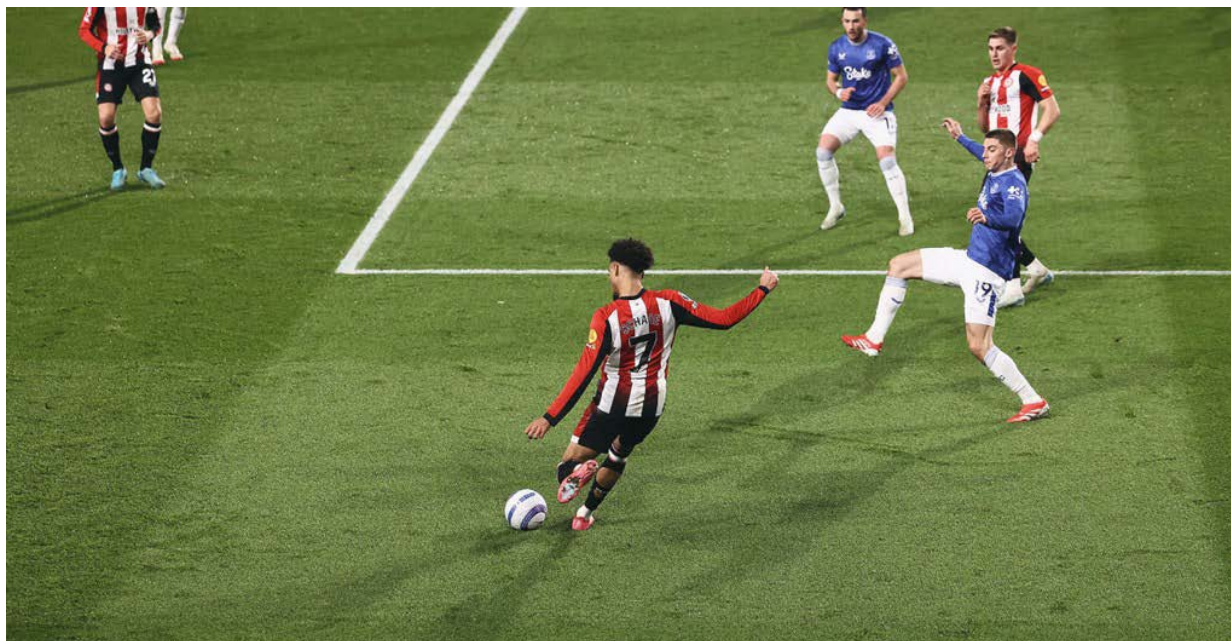
It was a similar story two minutes later as Flekken darted out to deny the in-form forward after he had got in behind the Bees backline for a second time.

Brentford finished the first half with a flourish. Pickford pushed away Wissa's curling effort from the edge of the area, before the DR Congo international gave his side the lead in the fourth minute of stoppage time.

Schade propelled the ball into the box, Bryan Mbeumo hit the crossbar with a close-range header, and Wissa reacted fastest to nod home from almost on the goal line.

Flekken made another important contribution shortly after the restart, clawing away Harrison's in-swinging corner from underneath the crossbar.

On 64 minutes, Alcaraz engineered some space on the edge of Brentford's box and his fierce strike nearly nestled into the bottom corner.



Wissa had the ball in the back of the net for a second time on 69 minutes, turning in from close range, but the forward had strayed offside to receive Lewis-Potter's pass.

Nathan Collins then connected with Mikkel Damsgaard's cross from the right but couldn't guide his header on target under pressure from a Toffees defender.

Everton levelled on 77 minutes. O'Brien ghosted in at the back post to meet Mykolenko's cross with a stooping header which flew beyond Flekken and into the bottom corner.

Beto found himself one-on-one with Flekken for a third time during the closing stages and was again left frustrated. The forward attempted to bend the ball into the far corner, but Flekken stood tall and got a strong hand to the ball.

Vitaly Janelt had a chance to win it for Brentford in the final seconds. Substitute Michael Kayode's long throw-in dropped kindly for the midfielder inside the six-yard box, but he didn't get a clean connection on his strike and the ball bounced wide.

**Brentford:** Flekken; Ajer (Kayode 81), Collins, Pinnock, Lewis-Potter; Janelt, Yarmoliuk, Damsgaard; Schade (Maghoma 76), Mbeumo, Wissa  
Subs not used: Valdimarsson, Carvalho, Mee, Konak, Ji-soo, Morgan, Arthur

**Everton:** Pickford; O'Brien, Tarkowski, Branthwaite, Mykolenko; Garner, Gueye (Iroegbunam 75); Lindstrøm (Young 75), Alcaraz, Harrison; Beto  
Subs not used: Virginia, Begović, Patterson, Keane, Chermiti, Sherif, Heath

**Attendance:** 17,082

### **Frank: A draw was probably fair**

Brentford head coach Thomas Frank admitted that the Bees' performance was "*not through the roof*" against Everton.

*"As always, there were many good things, but also some things we could have done better,"* he said.

*"I felt that our performances are quite consistent: we are in that bracket of not too bad, quite good, but not top. A lot of the time, that could have given us three points today.*

*"The performance was not through the roof, we probably lacked the last edge to go 2-0 up; if we had done that, we win the game.*

*"That said, Mark Flekken makes three unbelievable saves. He first gave us the opportunity to win the game with the first two saves, and then he made sure we got a point in the end.*

*"A draw was probably fair."*

### **Flekken: I'm gutted we didn't keep the clean sheet**

Mark Flekken shared his frustration after Brentford's 1-1 draw with Everton.

*"I'm happy with my own performance but gutted that we didn't keep the clean sheet,"* said the goalkeeper.

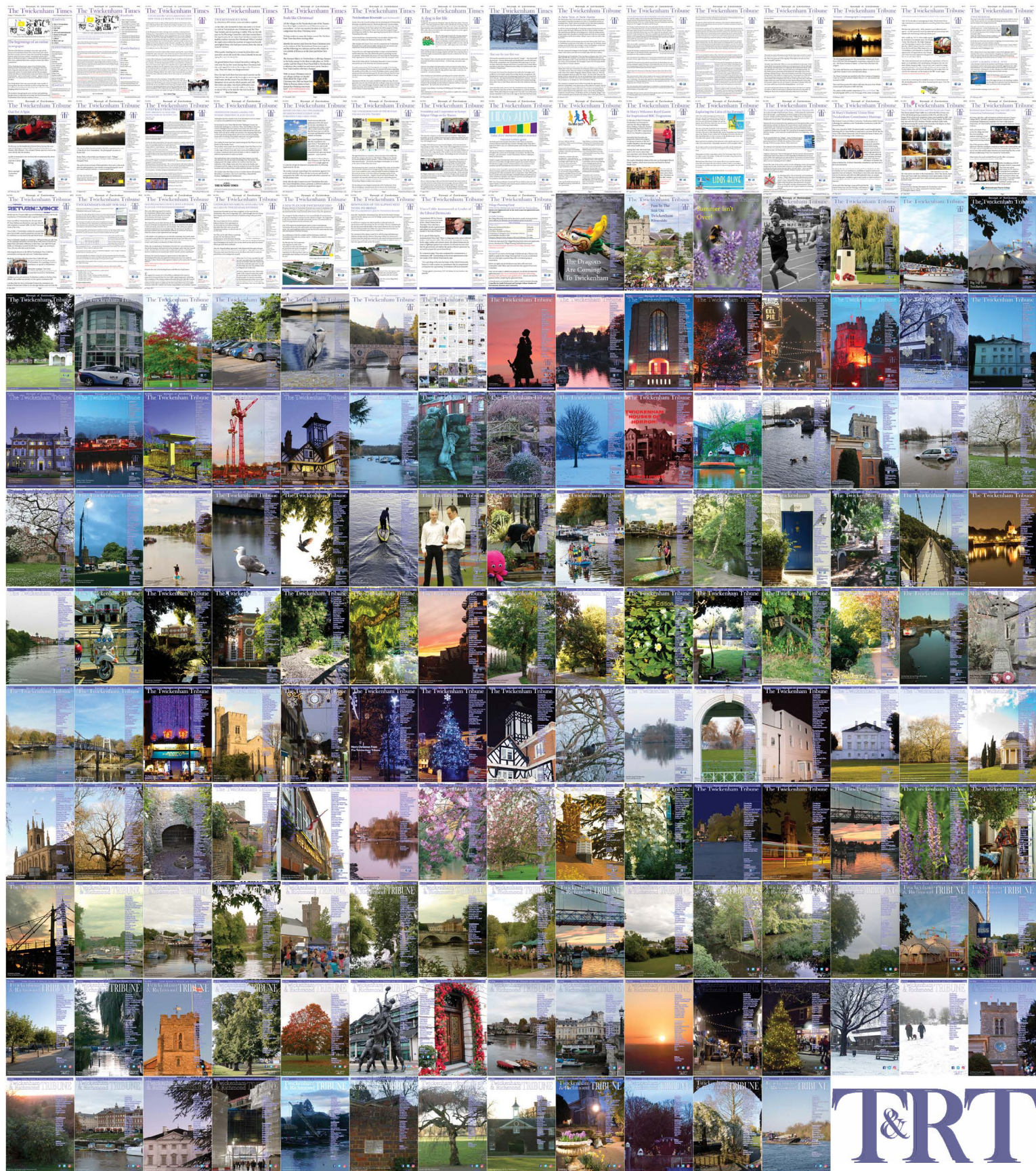
*"It was a good fight, a tight game, and we were a bit unlucky with Wissa's goal [that was ruled out for offside]. If we had gone 2-0 up, it would have been done and dusted."*

Asked what was going through his head when Toffees forward Beto raced towards him on three occasions, Flekken responded: "*Not too much! You have to stay calm, stay patient, and to not offer him a space to go for. React on his action. It all sounds a bit easy, but the patience is the hard part.*"





# 434 editions of the **Twickenham & Richmond Tribune** online - Lots to read: News, Reviews, History, Sports and On-going Sagas in the Borough of Richmond upon Thames





Half Page

Quarter Page  
Landscape

Quarter Page Portrait

Eighth Page

Eighth Page  
Landscape

Example advert sizes shown above

Thousands read The Twickenham & Richmond Tribune

If you are reading this you could be advertising your business with  
The Twickenham & Richmond Tribune. Community rates are  
available

Contact: [advertise@TwickenhamTribune.com](mailto:advertise@TwickenhamTribune.com)

View ad details at [www.TwickenhamTribune.com/advertise](http://www.TwickenhamTribune.com/advertise)

**Contact**

[contact@TwickenhamTribune.com](mailto:contact@TwickenhamTribune.com)  
[letters@TwickenhamTribune.com](mailto:letters@TwickenhamTribune.com)  
[advertise@TwickenhamTribune.com](mailto:advertise@TwickenhamTribune.com)



**Published by:**

Twickenham & Richmond Tribune (in association with World InfoZone Limited)

Registered in England & Wales

Reg No 10549345

The Twickenham Tribune is registered with the ICO under the Data Protection Act, Reg No ZA224725

©Twickenham & Richmond Tribune. All rights reserved. No part of this publication may be used or reproduced without the permission of Twickenham & Richmond Tribune. While we take reasonable efforts, this online newspaper cannot be held responsible for the accuracy or reliability of information. The views and opinions in these pages do not necessarily represent those of The Twickenham & Richmond Tribune.

[Terms & Conditions](#)